

Clark County Anchor Community Initiative



A WAY HOME
WASHINGTON

ACI Overview



Welcome to the **ACI!**

Skagit County

Whatcom County

Thurston County

Jefferson-Clallam

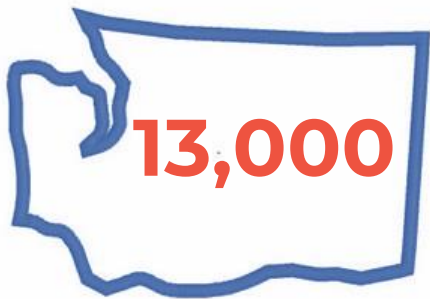
Spokane County

Pierce County

Clark County

Walla Walla County

Yakima County



Unaccompanied
youth and young
adults

Youth

Ages 12 – 17

Young Adults

Ages 18 – 24

Families



of all kinds



EVERY SYSTEM
IS PERFECTLY
DESIGNED
TO GET
THE RESULTS
IT GETS.
-W. EDWARDS DEMING

How can
we say
Yes?

By Name List

Achieve a comprehensive, real-time, quality By-Name List that produces reliable data.

BNL Scorecard

+

Reliable Data

+

YYA Engagement

Reduce to Zero

Drive monthly reductions in active youth and young adult homeless number

Systems Improvement

+

Monthly Reductions

+

Race/LGBTQ+ Equity

End & Sustain

Reach functional zero, end disproportionality and sustain gains

Confirm Zero

+

Equitable Outcomes

+

Sustain

Leadership, Building the Will, Youth & Young Adult Voice



By Name List Phase Breakdown

By Name List

*Achieve
a comprehensive, real-time,
quality By-Name List that
produces reliable data.*

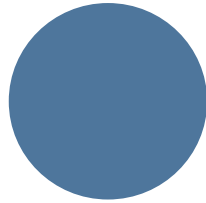
BNL Scorecard

+

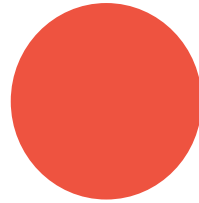
Reliable Data

+

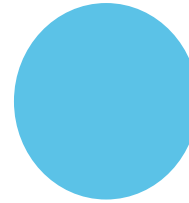
YYA Engagement



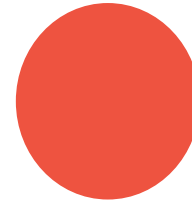
**System-Level
Data
Infrastructure**



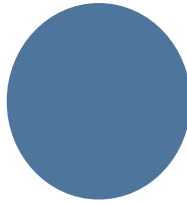
**BNL Case
Conferencing**



Outreach



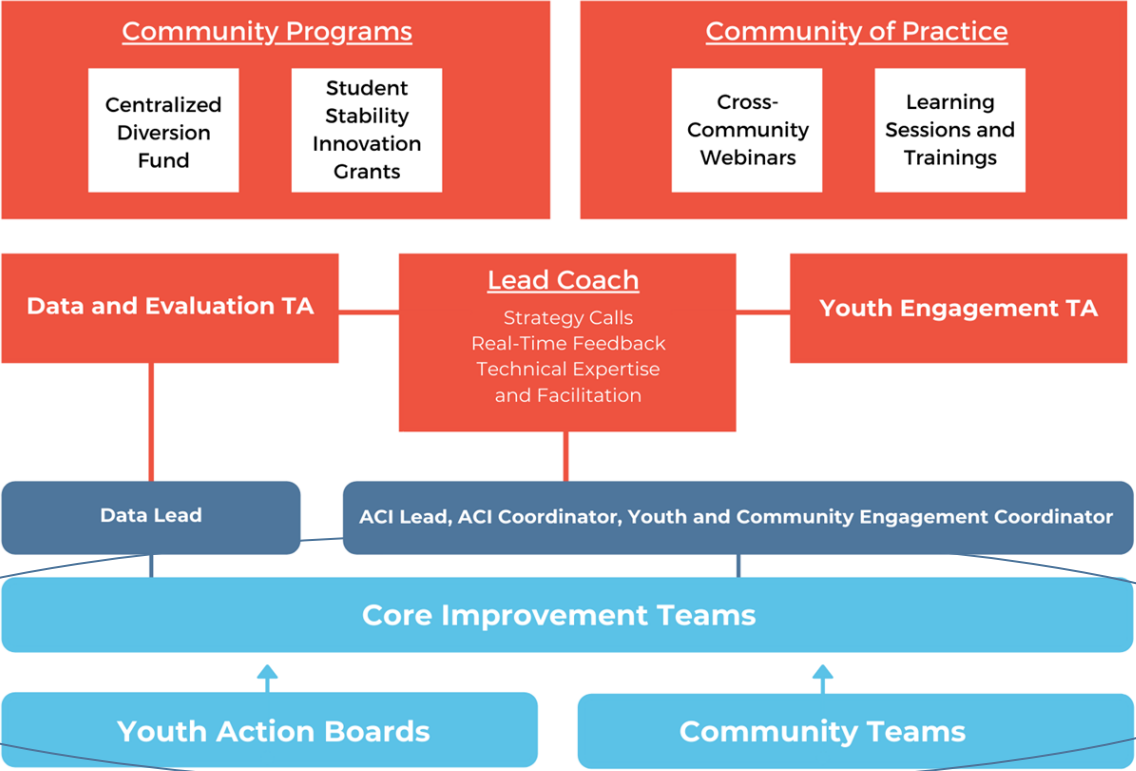
**Policies &
Procedures**



**Community
Participation**

YYA Approval

ANCHOR COMMUNITY INITIATIVE



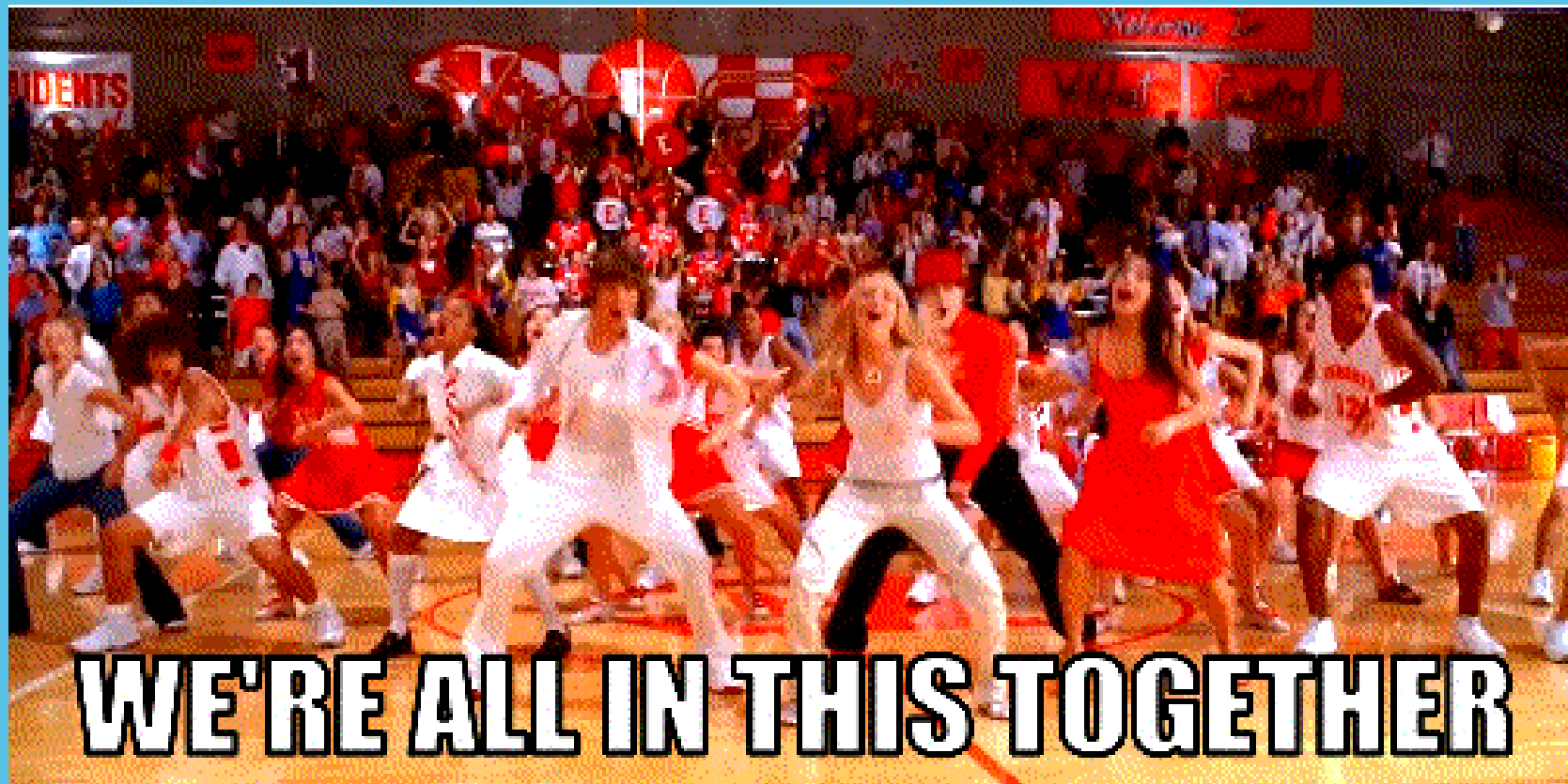
What's Next In Clark?



What's Going On Now

- We are blazing through the YBNL Scorecard
- YBNL is on the way
- HPDF
- IN Reach Team





Terrell Berry

tberry@awayhomewa.org

