

Clark County Homeless System Numbers 2018

TOTALS



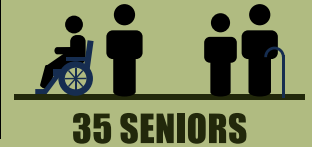
This includes **826 FAMILIES WITH CHILDREN & 264 VETERAN FAMILIES**



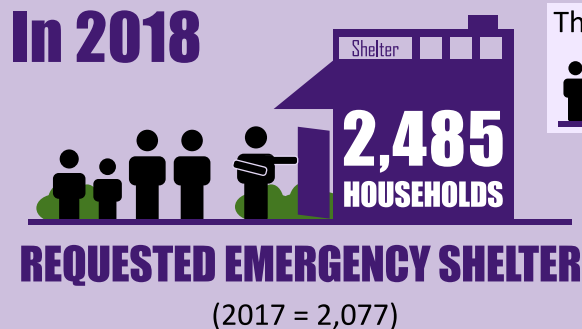
They requested assistance with emergency shelter, regaining stable housing, or both. Overall, 588 households contained seniors and there were 1,293 children under 18, including 520 children under 6 years old. This need represents 1.8% of the 168,000 total Clark County households.

DIVERSION

COUNCIL FOR THE HOMELESS HELPED HOUSE



SHELTER



This includes **741 FAMILIES WITH CHILDREN & 241 VETERAN HOUSEHOLDS**



CFTH placed 916 households (37%, down from 40% in 2017) into partner shelters at some point during 2018. This included 121 families with children (264 unique children), 233 households with seniors, and 101 households with Veterans.

Who was placed in a shelter?

916 households (HH = households) were placed into a shelter.

